



THE ILLICIT WILDLIFE TRADE **IN CONTEXT**

AS IT IMPACTS ON RHINOCEROUS POACHING IN THE KRUGER NATIONAL PARK

SANParks SOLITARY AS IT FACES THE BIGGEST CHALLENGE IN A CENTUARY IN KRUGER NATIONAL PARK

RHINO POACHING IN CONTEXT

The Illicit Wildlife Trade has 4 primary interactive ingredients

SYNDICATED CRIME

GREED
POACHERS
POVERTY

ILLICIT
WILDLIFE
TRADE

\$
DEMAND

ENVIRONMENTAL ASSETS



ENVIRONMENTAL ASSETS

Armageddon of the Rhino will or will not be in Kruger
...with over 60% of the world rhino population



**Cost of Ownership
= Resources**

- implied by over R Bn 40 worth of Rhino
- ahead of gold, platinum, and diamonds!

Treat Rhino according to it's value – higher than gold



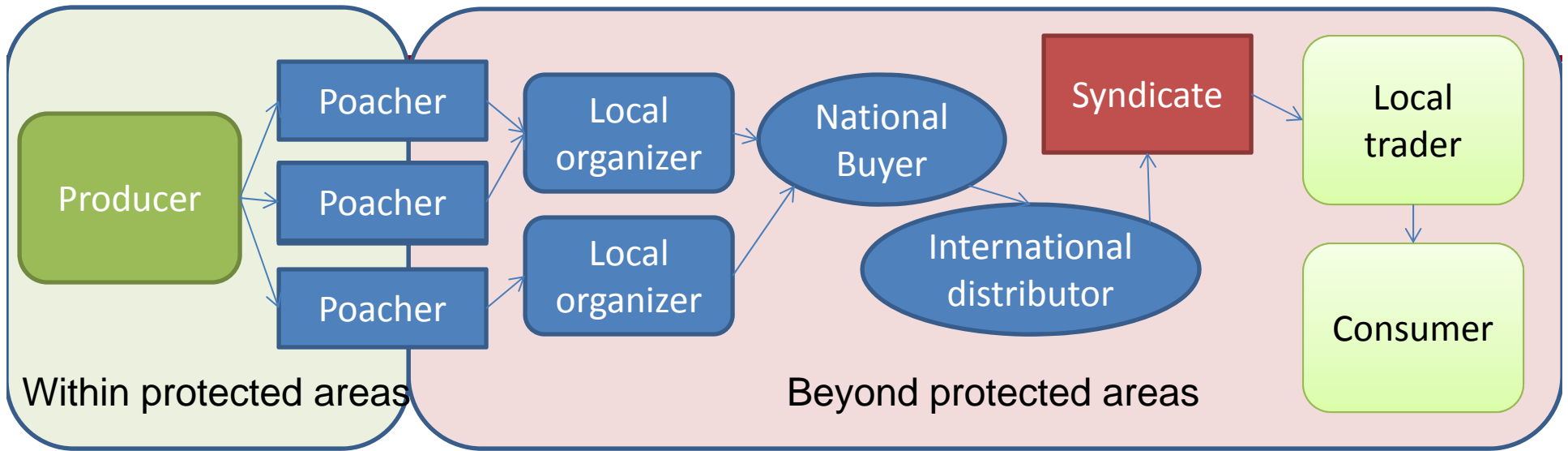
A Global Challenge



Supply meets demand largely in Kruger

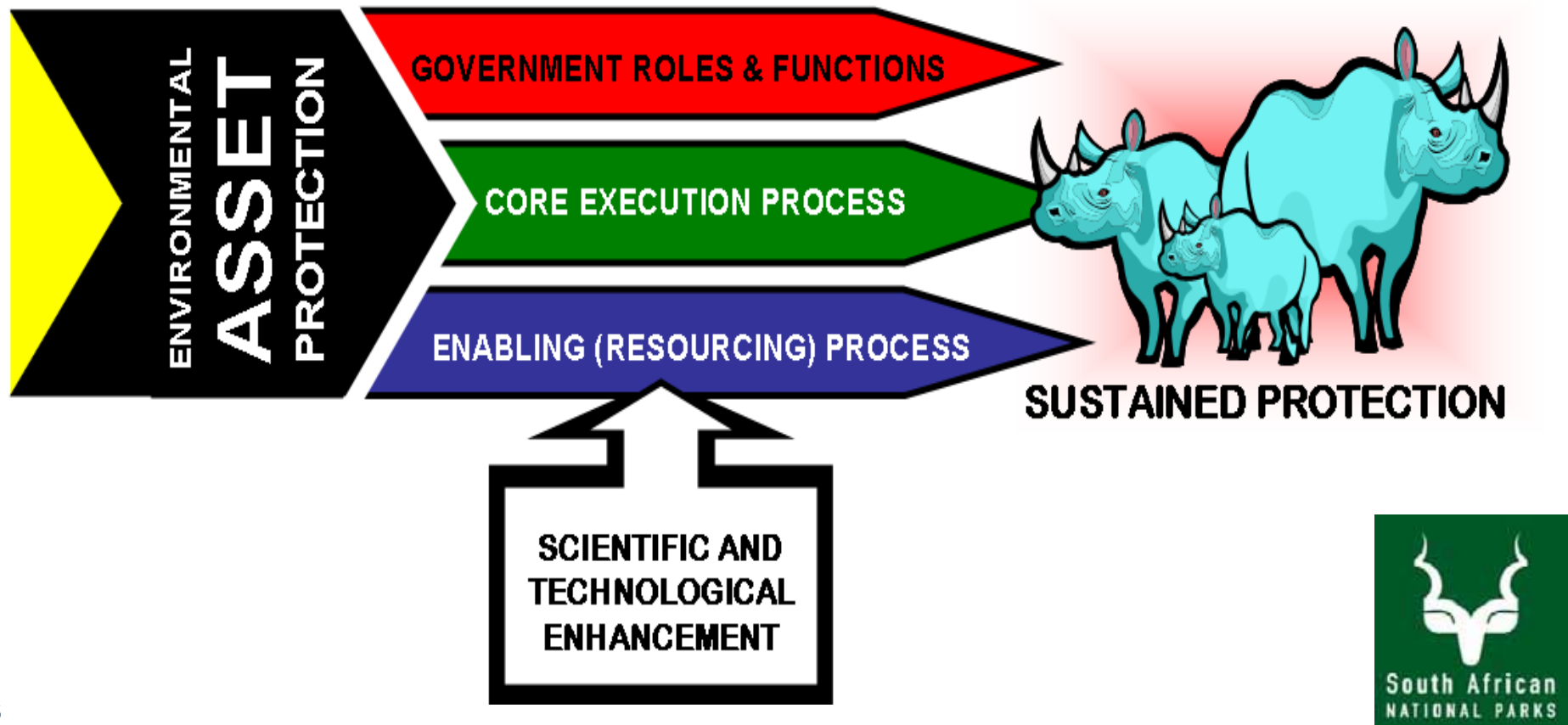


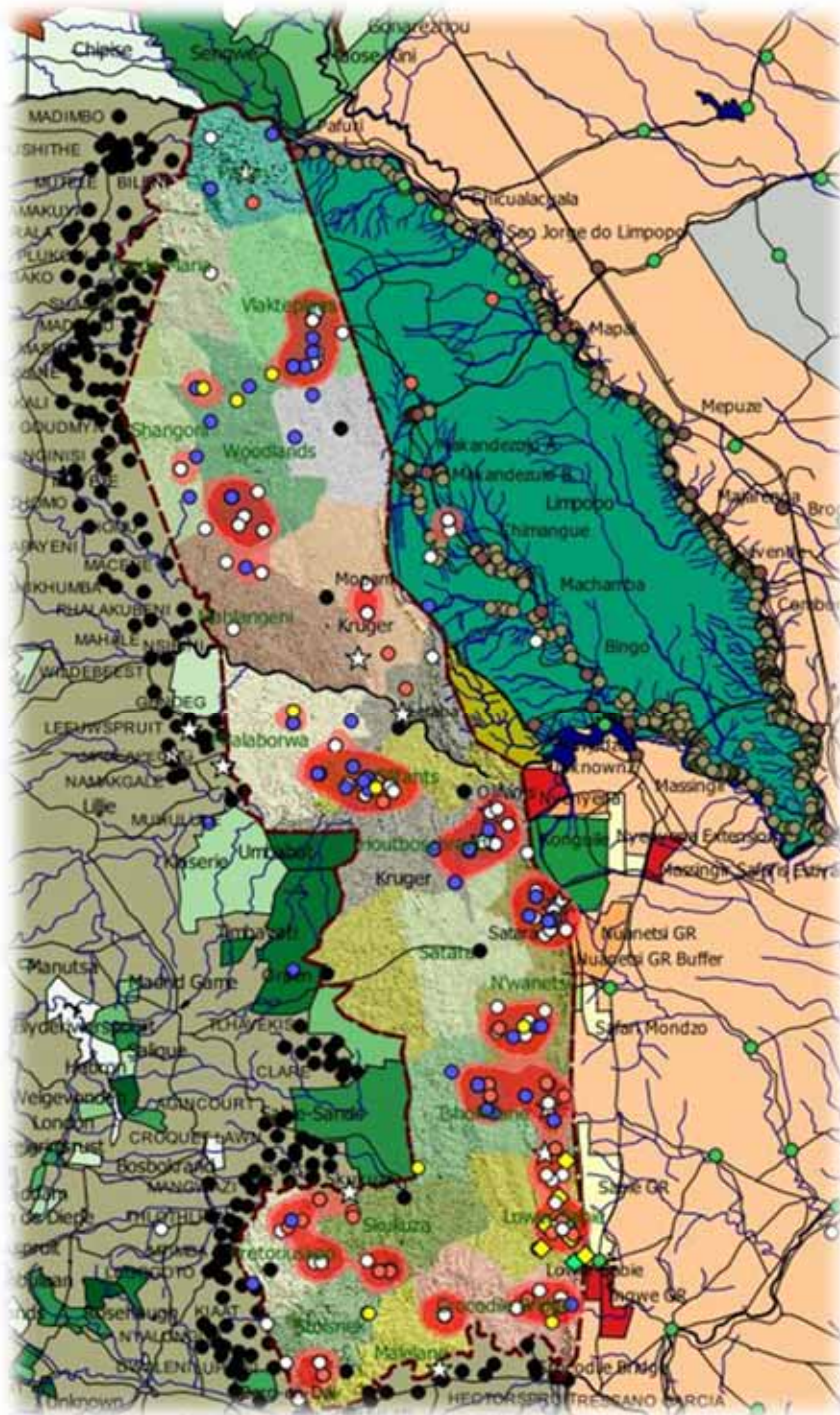
Protecting assets - key element



Elements of Successful Environmental Asset Protection

Enforce - Law enforcement* integral to Conservation





The KRUGER CHALLENGE

KNP is 2,000,000ha (20,000km²)

380km x 60km

1000 km border line

356km border with Mozambique

The Lebombo mountain range

1,4 Million tourists per annum

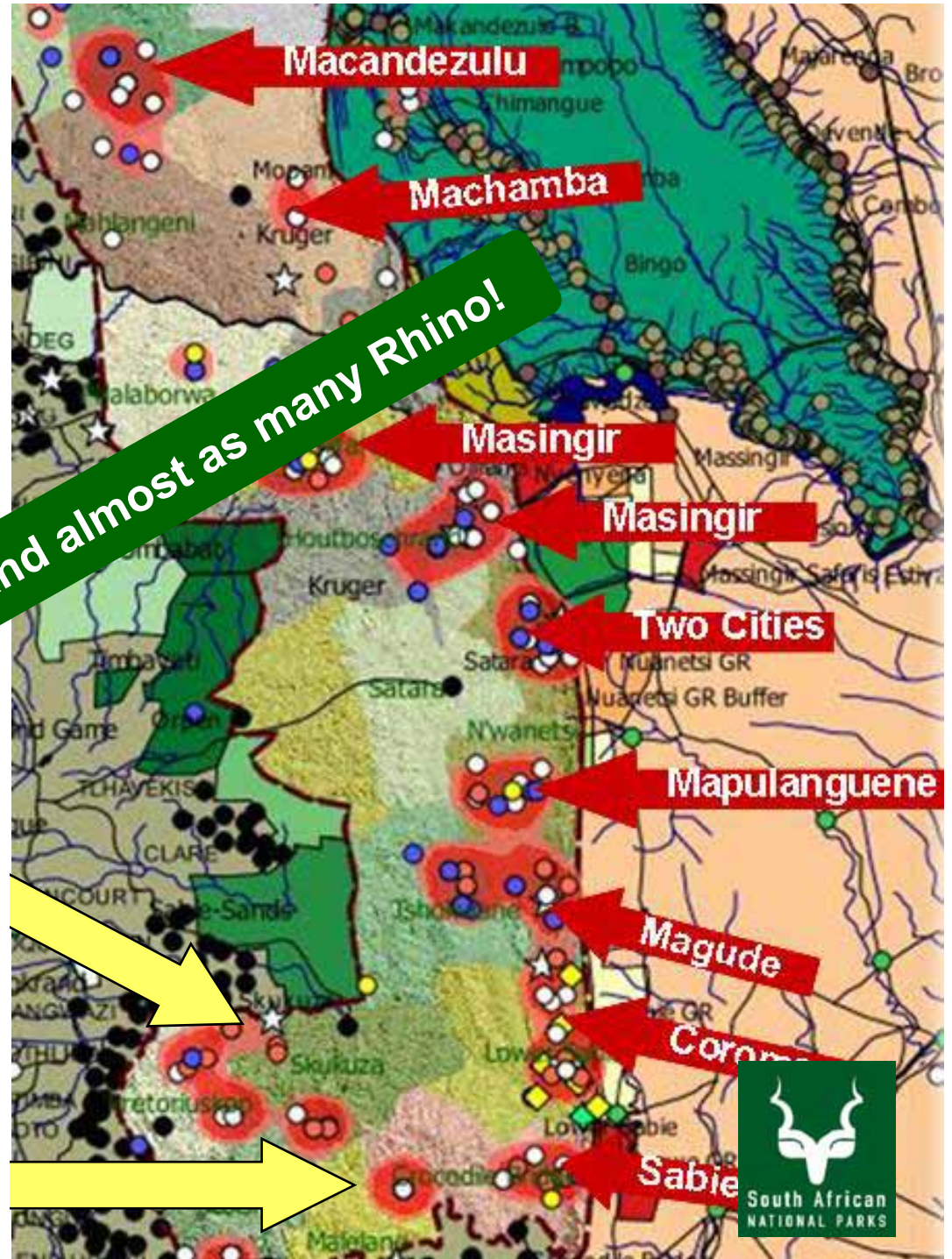


THE KRUGER PROBLEM

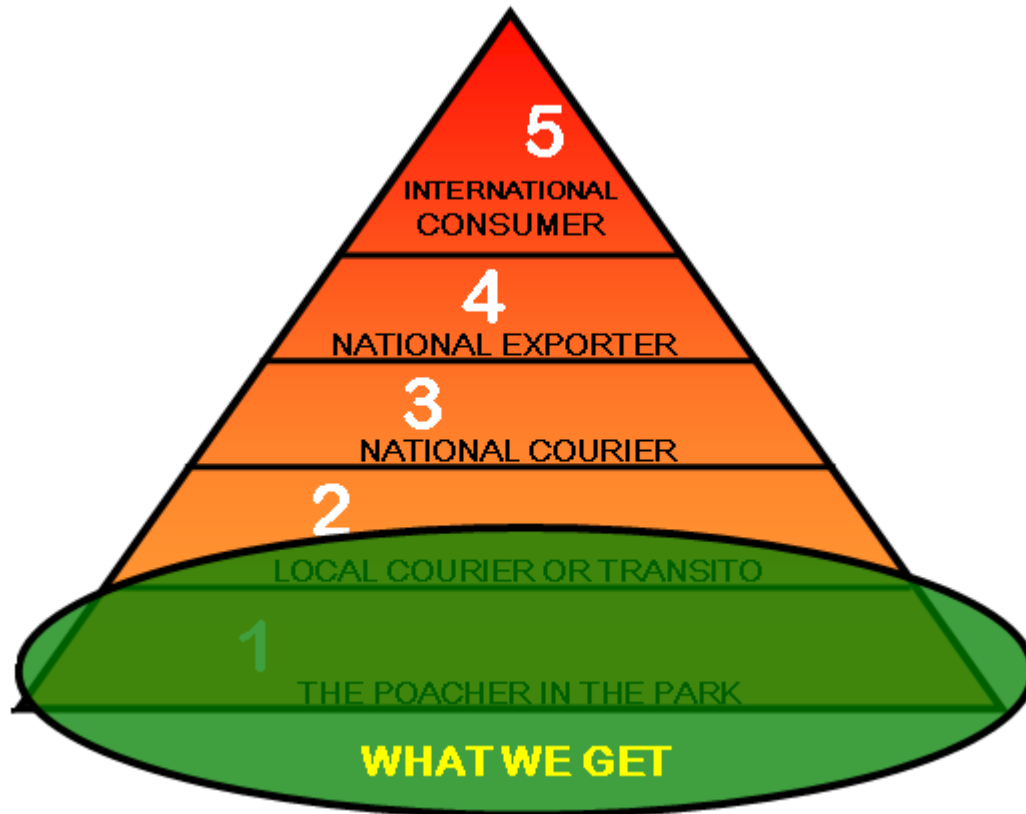
The role of **Mozambican** citizens (and officials) cannot be overstated

Hot Spot Map of a 1000 words and almost as many Rhino!

...also poaching incursions from **South African** soil



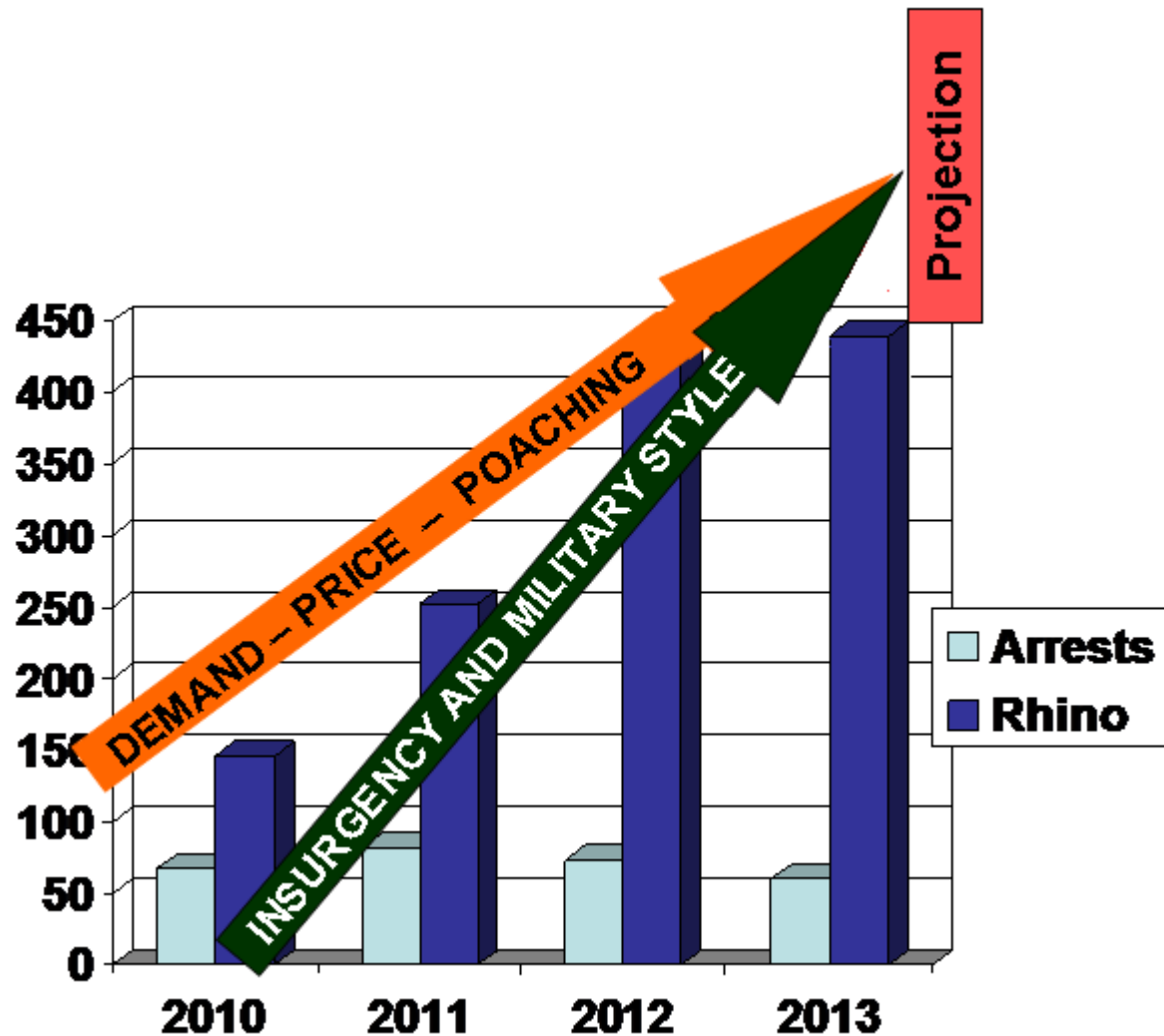
THE VALUE CONDUIT CHALLENGE AND RISKS



The Ranger Corps can only influence on the ground

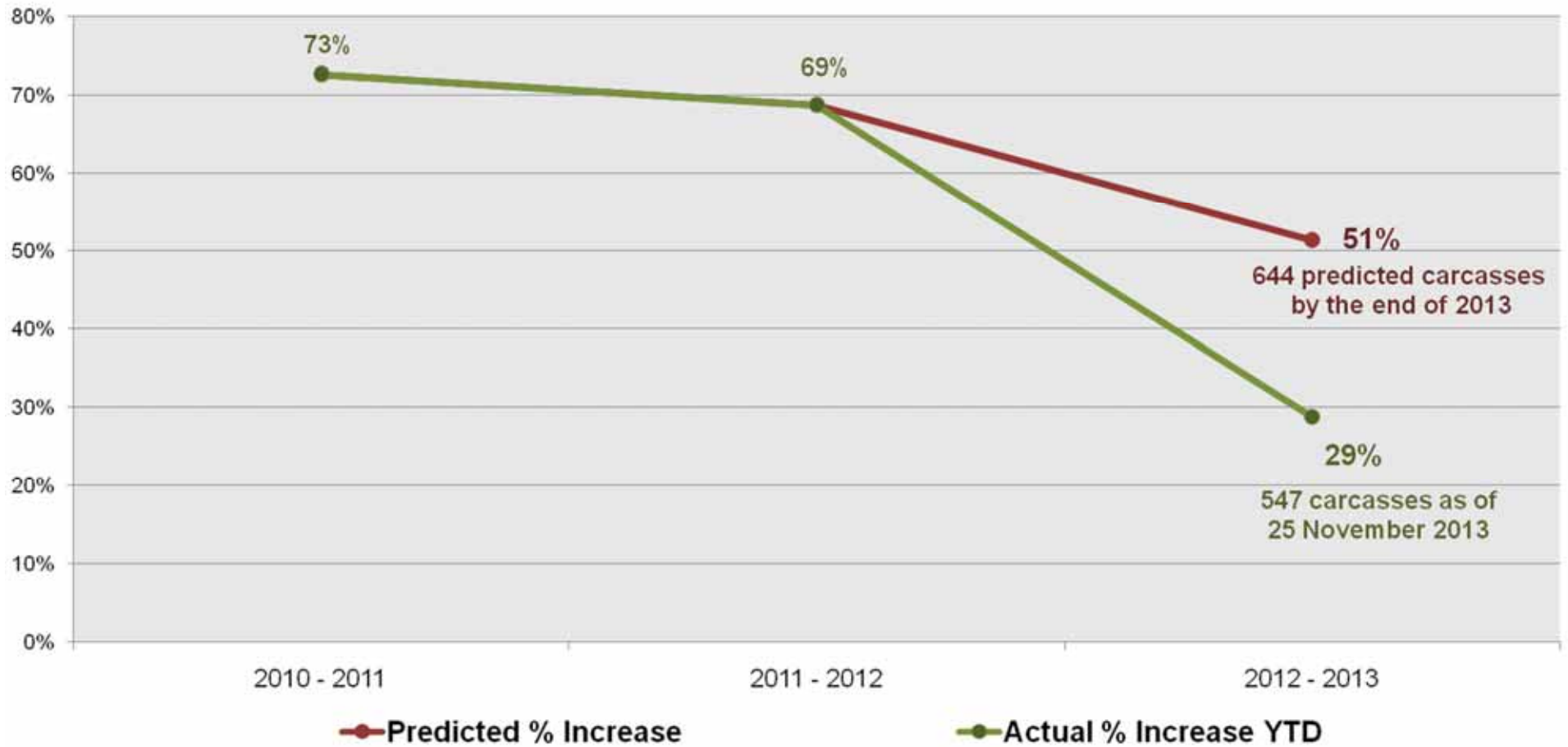
- Ranger life and limb
- Wide spread corruption
- Mass incursion and poaching
- Tourists and tourism interference / impact
- Other Parks, other animals
- Too little to late

CURRENT REALITY IN KRUGER

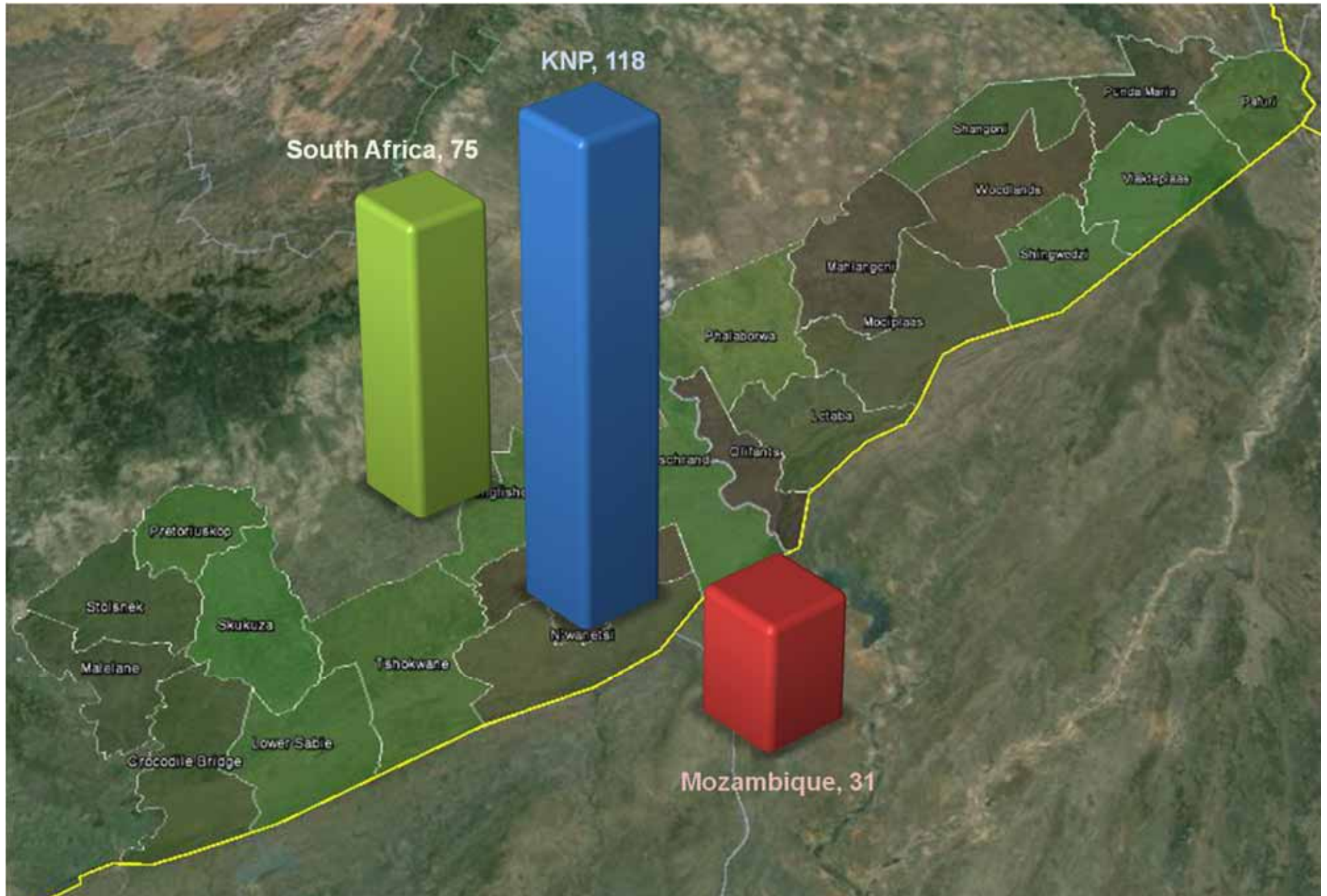


Poachers are replaced at a faster rate than Rhino

Annual % Increase in Carcasses found in the KNP



Poachers Neutralised in & around the KNP in 2013



Approach

Think big

- Demand - SEA
- Mozambique
- Total solution/capability
- Technology

Start small

- Pro active
- Intelligence
- Alliances
- Task Force effect

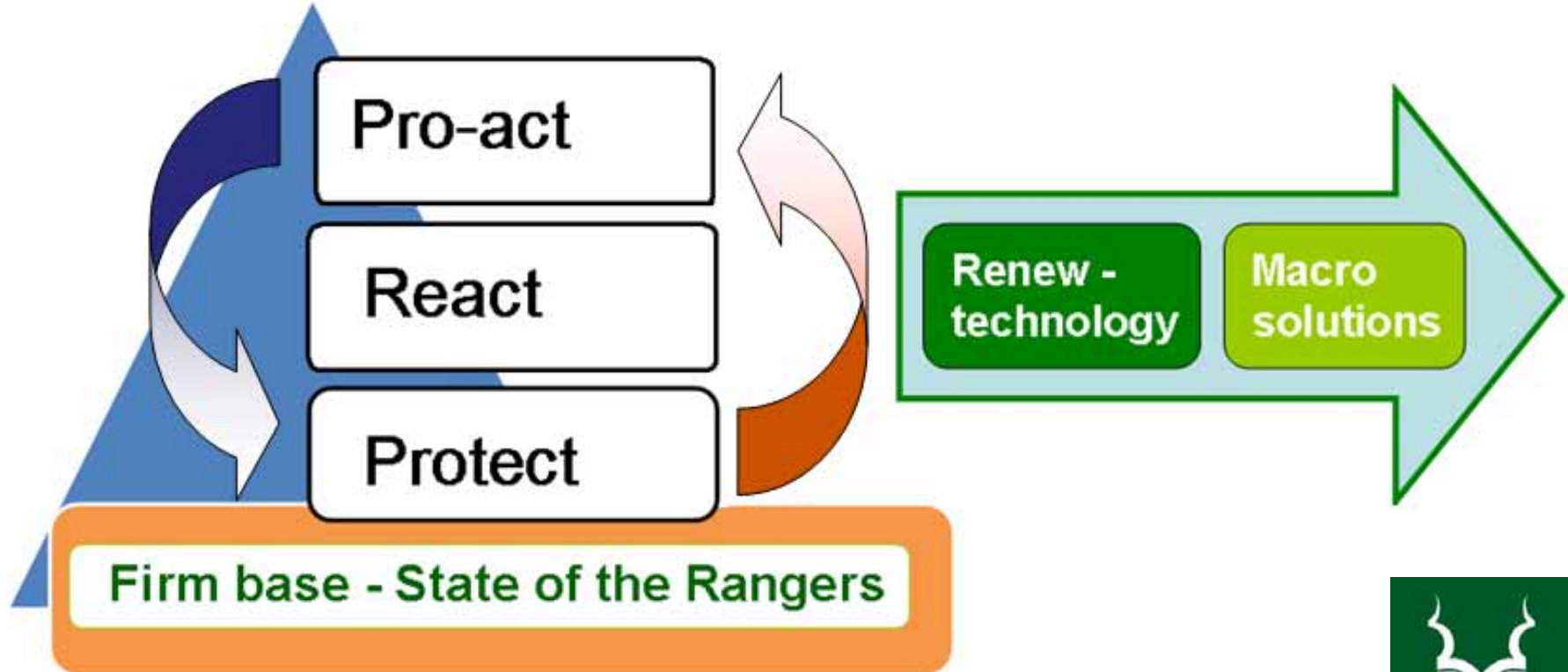
Act now

- Ranger corps
- Protect
- React

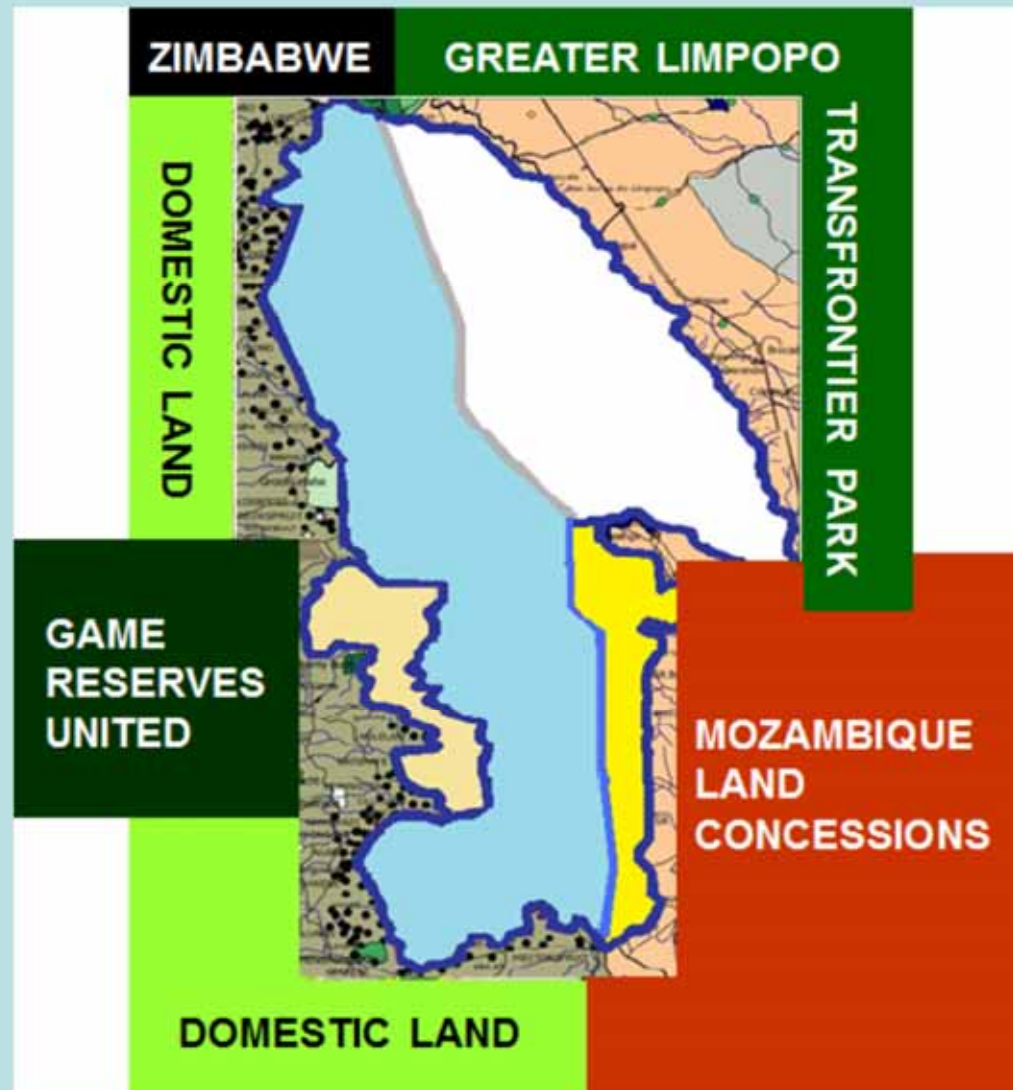
Manage complexity

FACING THE CHALLENGE

STRATEGIC FRAMEWORK



Clear the Park from the outside at a local scale



LUCO TOURISMO

OPERATION LEBOMBO

CHISSANO FOUNDATION



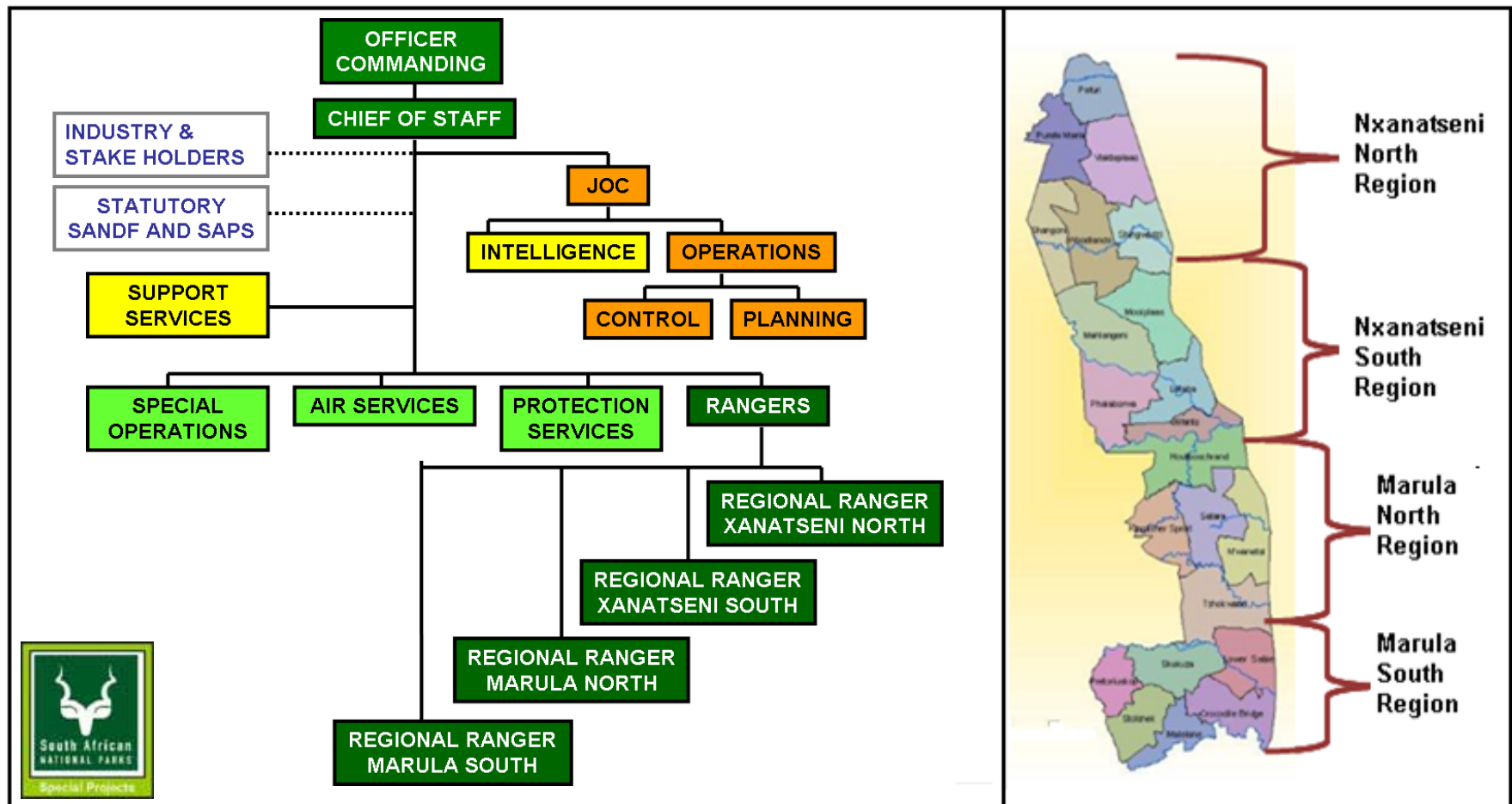
STRATEGIC OPTIONS

- Force – All relevant participants adequately involved
- Enforce – Real legal measures
- Fortify – Intensive Protection Zone
- Out-Class - Technology solutions
- Propagate – Social media
- Mitigate – Rhino options



MANAGING THE KRUGER FORCE

ORGANISATIONAL COMMAND AND CONTROL



Converting rangers to an anti-poaching force

People	Empower Rangers to leaders
Organisation	Clear lines of command
Sustainment	All facets of support
Training	Anti-poaching focussed
Equipment	Best, including technology
Doctrine	Anti-poaching



FORCE MULTIPLIERS

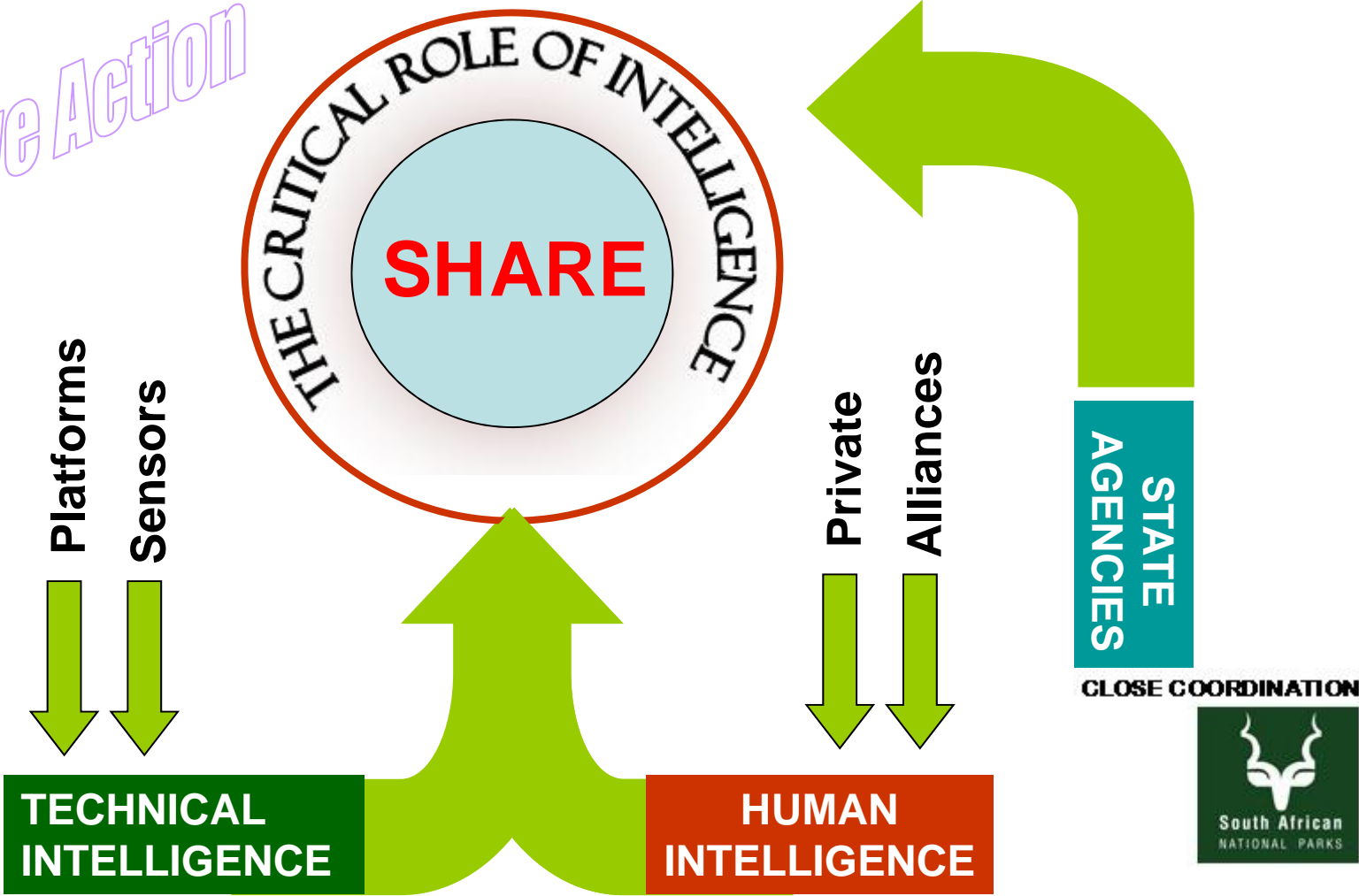
Persistent and
unpredictable

- **Expand air services**
- **Special rangers**
- **Night enhancement**
- **Canine capabilities**



INTELLIGENCE BASED FORCE MULTIPLIERS

Proactive Action



CONCEPT OF FORCE OPERATIONS

Establish Actionable Intelligence Systems



Create Buffer Zones



Established detection zones (along strategic entry points/areas and border posts)



Integrated command, communication and early warning technology systems



Sustained specialised intervention unit deployments



Sustainable support infrastructure



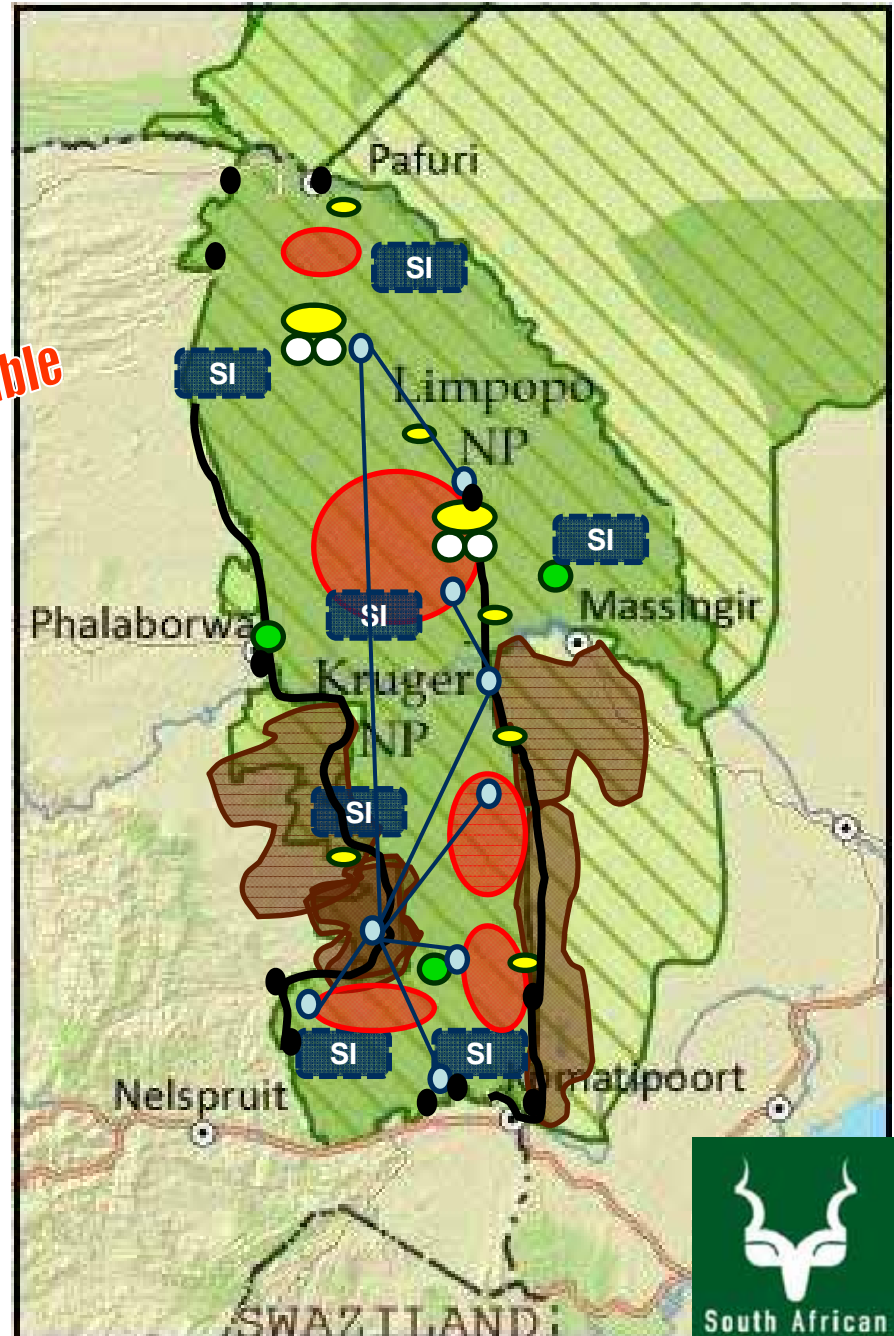
Strategically placed Pickets



Mobile Patrols



Unpredictable



BEING NOT THE ONLY FORCE

Force National anti-poaching force of 1000 people with specialist support operating from outside the park



START WITH INTELLIGENCE = Focus on syndicates

ENFORCING LAWS

Enforce in Mozambique

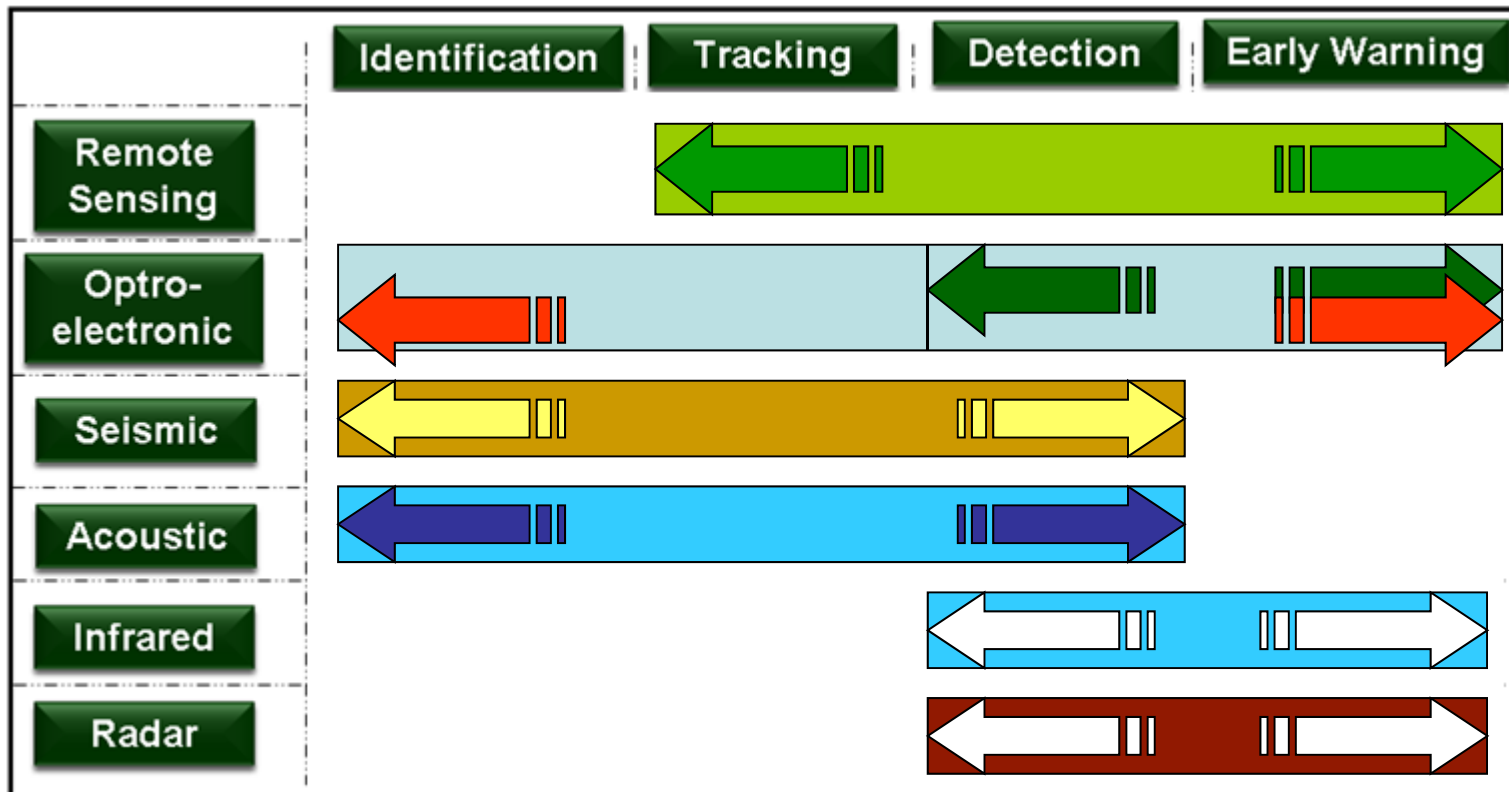


Concerted political, diplomatic and economic pressure to the point of criminal and civil legal actions



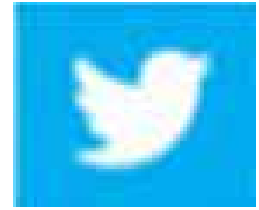
OUTCLASS POACHERS

Use technology sensibly



PROMOTE CULTURAL SENSITIVE PROPAGANDA

MILLIONS TO CONDEMN
THE SLAUGHTER



YES
YES
YES!



Disgrace the Killers!

Required intellectual support on the drivers of demand and market sentiment of Rhino Horn



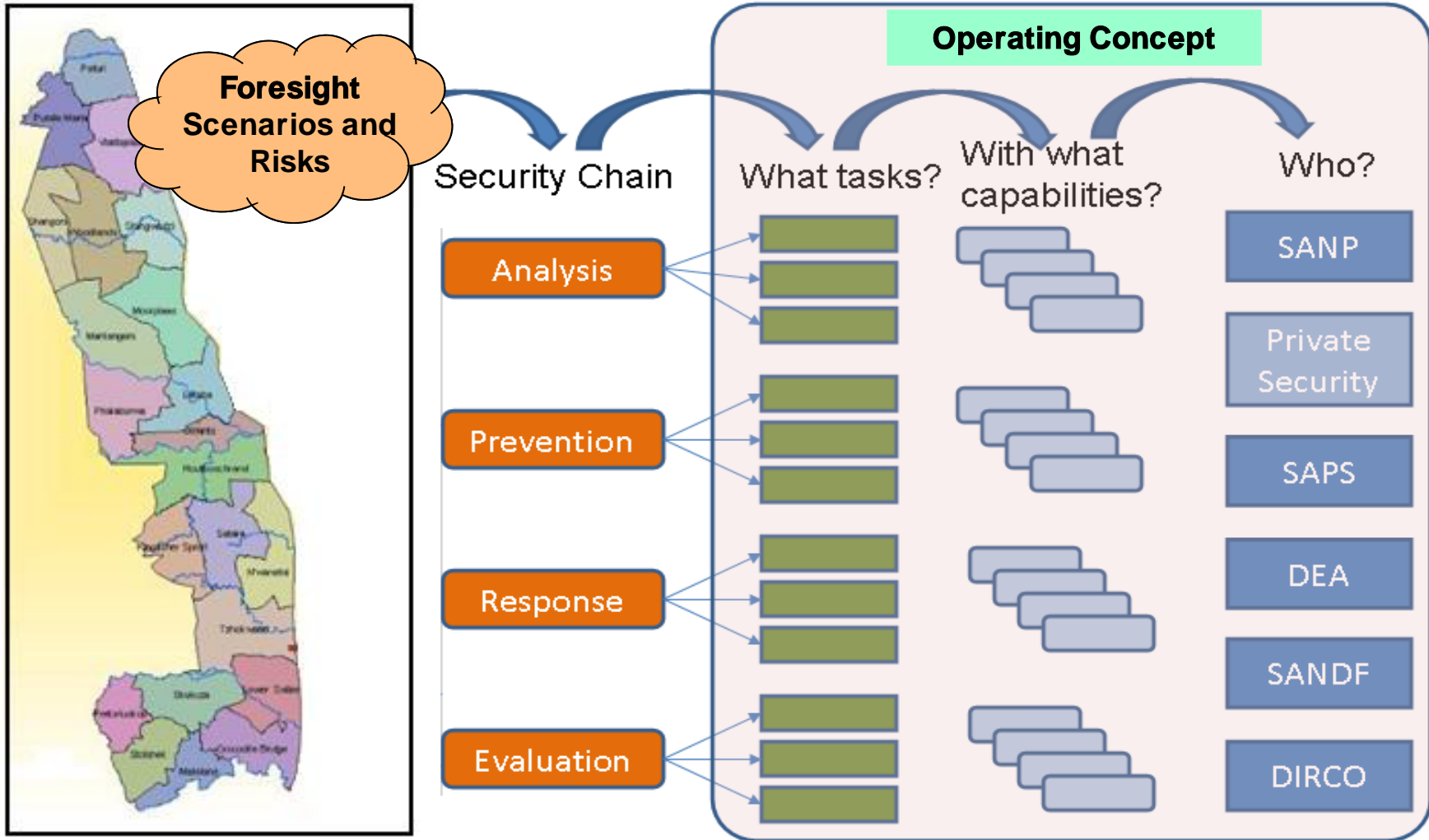
MITIGATE THE ASSET



Remove...
Relocate...
Trade...
Treat...?

NATIONAL RESPONSIBILITY

COMPOSITE SOLUTIONS



What should we communicate to our Visitors?

- **SANParks and its partners, have the most highly qualified teams in Africa, although not big enough to cover the expanse of Kruger**
- **The war will not be won in Kruger. International Boundaries**
- **This is an international problem requiring International solutions.**
- **The poaching Rate has not yet exceeded the breeding rate**
- **Communities play a key role... and so can you..**
- **There is hope...Passion, Technology, Sanctuaries etc.**

South Africa...
our country,
our rhino!



 WILDERNESS
SAFARIS